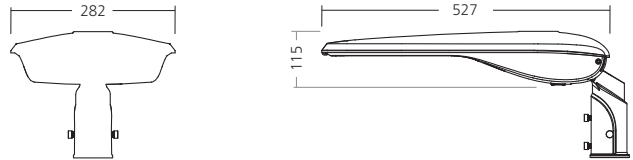
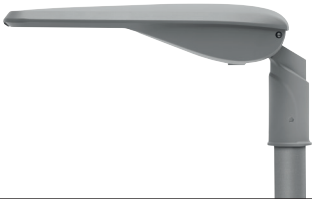
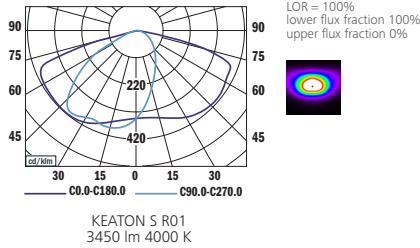
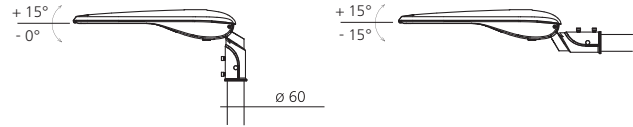


KEATON S
LENSES
LED

Keaton S



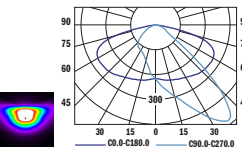
MOUNTING



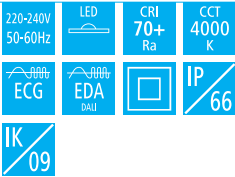
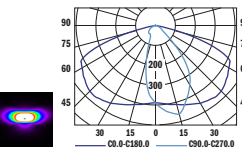
TYPE	NET LUMEN OUTPUT (at Ta = 25°) (lm)	POWER CONSUMPTION (W)	SYSTEM EFFICACY (lm/W)	COLOUR RENDERING INDEX CRI (Ra)	CORRELATED COLOUR TEMPERATURE CCT (K)	WINDAGE AREA SIDE / TOP (m²)	WEIGHT (kg)	RECOMENDED MOUNTING HEIGHT (m)	REPLACEMENT OF STANDARD
KEATON S	3450	30	115	70+	4000	0.032/0.141	5.0	5-8	HPS 70 W
KEATON S	4450	35	127	70+	4000	0.032/0.141	5.0	5-8	HPS 70 W
KEATON S	5900	50	118	70+	4000	0.032/0.141	5.5	7-10	HPS 100 W

Luminous flux tolerance +/- 10%

R02



R03



EN

Mounting
Pole-top/side entry installation (PMT)
Light source
LED
Optical system
Lenses (R01)
On request: R02, R03
Wiring
Electronic control gear FIX/DALI (ECG/EDA)
External lead-in flexible cable
Materials
Housing: die-cast aluminium
Cover: transparent hardened glass
Tilttable spigot: die cast aluminium
Surface finish
Housing: grey RAL 9006 (G06)
Service lifetime
50,000 hours/L80/B10 (ta 25°C)
Ambient temperature
From -30 °C to +40 °C

DE

Montage
Aufsatz-/Seitenansatz-Installation (PMT)
Lichtquelle
LED
Optisches System
Linsen (R01)
Auf Anfrage: R02, R03
Vorschaltgerät
Elektronisches Vorschaltgerät FIX/DALI (ECG/EDA)
Externes Anschlusskabel
Material
Körper: Aluminiumdruckguss
Abdeckung: durchsichtig gehärteter Glas
Schwenkbarer Zapfen: Aluminiumdruckguss
Oberflächenveredelung
Körper: grau RAL 9006 (G06)
Lebensdauer
50,000 Stunden/L80/B10 (ta 25°C)
Umgebungstemperatur
Von -30 °C bis +40 °C

FR

Montage
Installation supérieur du pôle/d'entrée latérale (PMT)
Source lumineuse
LED
Système optique
Lentilles (R01)
Sur demande: R02, R03
Équipement électrique
Ballast électronique FIX/DALI (ECG/EDA)
Artère externe
Matériels
Corps: aluminium moulé sous pression
Couvercle: verre trempé transparente
Ergot inclinable: aluminium moulé sous pression
Finition de surface
Corps: gris RAL 9006 (G06)
Durée de vie utile
50,000 heures/L80/B10 (ta 25°C)
Température ambiante
De -30 °C à +40 °C

SK

Montáž
Montáž na stĺp/zbo strany (PMT)
Svetelný zdroj
LED
Optický systém
Šošovky (R01)
Na požiadanie: R02, R03
Elektrická výbava
Elektronický predradník FIX/DALI (ECG/EDA)
Prívodný napájací kábel
Material
Teleso: hliníkový odliatok
Kryt: transparentné tvrdené sklo
Sklopný nástavec: hliníkový odliatok
Povrchová úprava
Teleso: šedá RAL 9006 (G06)
Servisná životnosť
50,000 hodín/L80/B10 (ta 25°C)
Teplota okolia
Od -30 °C do +40 °C

ES

Montaje
Instalación en poste superior/de acceso lateral (PMT)
Fuente luminica
LED
Sistema óptico
Lentes (R01)
A petición: R02, R03
Cableado
Equipo de control electronico FIX/DALI (ECG/EDA)
Cable alimentador externo
Material
Cuerpo: aluminio moldeado
Cubierta: cristal endurecido transparente
Espiga inclinable: aluminio moldeado
Tratamiento de la superficie
Cuerpo: gris RAL 9006 (G06)
Vida útil
50,000 horas/L80/B10 (ta 25°C)
Temperatura ambiente
Desde -30 °C a +40 °C

IT

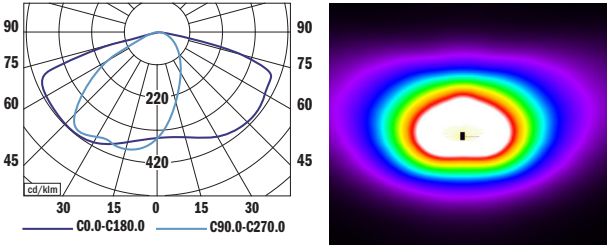
Installazione
Installazione testa palo/ingresso laterale (PMT)
Sorgente luminosa
LED
Sistema ottico
Lenti (R01)
Su richiesta: R02, R03
Cablaggio
Ballast elettronico FIX/DALI (ECG/EDA)
Cavetto di alimentazione esterno
Materiali
Corpo: pressofusione di alluminio
Copertura: vetro temperato trasparente
Perno inclinabile: pressofusione di alluminio
Finitura
Corpo: grigio RAL 9006 (G06)
Durata di vita
50,000 ore/L80/B10 (ta 25°C)
Temperatura d'ambiente
Da -30 °C a +40 °C

RU

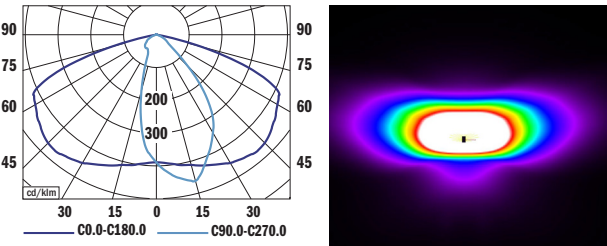
Установка
Установка на верхушке мачты / со стороны входа (PMT)
Источник света
LED
Оптическая система
Линзы (R01)
По запросу: R02, R03
Электрическое оснащение
Электронный пускорегулирующий аппарат FIX/DALI (ECG/EDA)
Внешний свинца в гибком кабеле
Материал
Корпус: литой алюминий
Крышка: чистое закаленное стекло
Поворотный патрубок: литой алюминий
Отделка поверхности
Корпус: серый RAL 9006 (G06)
Срок службы
50,000 часов/L80/B10 (ta 25°C)
Температура окружающей среды
От -30 °C до +40 °C

Low-glare lens optics that deliver any of 3 different LIDCs means there is a KEATON for any roads application.

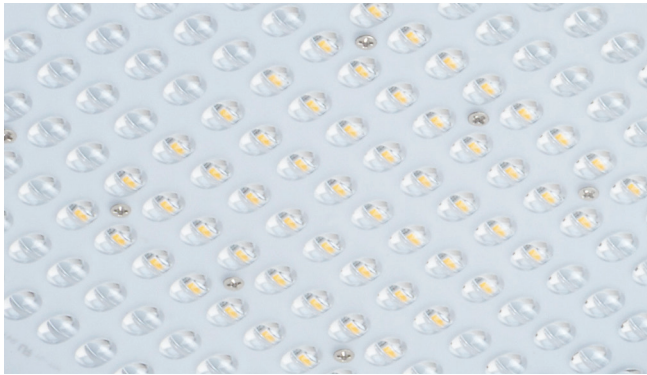
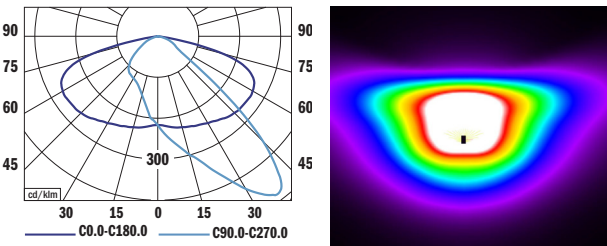
R01
Determined for the illumination of streets with or without pavements. Light is distributed in front and to the sides of the luminaire, but not behind so as to minimise light pollution.



R03
Determined for the illumination of streets with or without pavements. Light is distributed in front and to the sides of the luminaire, but not behind so as to minimise light pollution.



R02
Determined for the illumination of streets with or without pavements. Light is distributed in front and to the sides of the luminaire, but not behind so as to minimise light pollution.



Optical system has been carefully designed by experienced optical engineers to ensure its suitability for areas where glare control is important according to Luminous Intensity Classification EN 13201-1 Appendix A1.